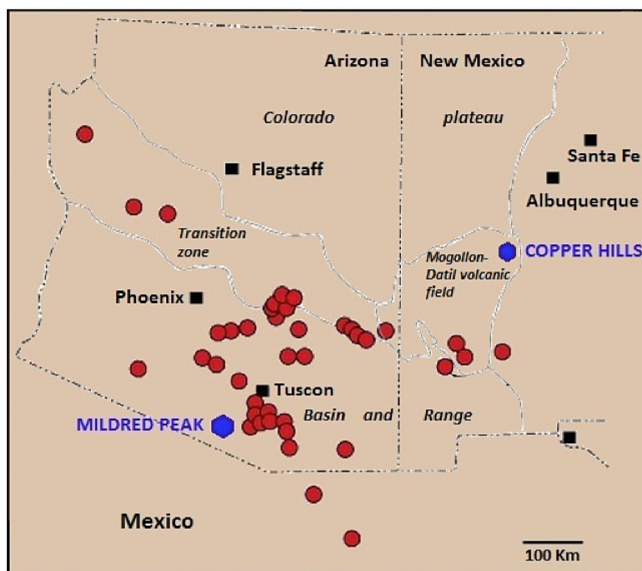


Enertopia Corp: TOP

Today's Investment for Drill-Ready Success

Copper Hills and Mildred Peak located in some of the most prospective geology close to existing infrastructure:



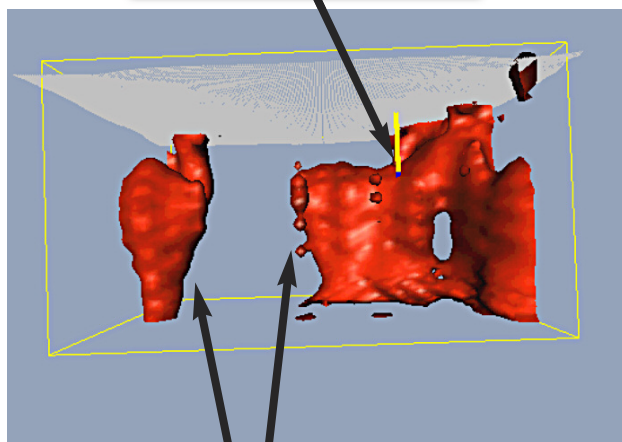
● Location of porphyry copper deposits in the southwestern United States (modified from Titley and Anthony, 1989)

Copper Hills, NM Copper Silver project has been brought to the drill ready stage. First phase drill program to test the 300m X 800m IP anomaly. Also 10 shallow drill holes will be completed to test for extensions to the near surface oxide zone at copper hills that historically returned a 350 ton sample that averaged 0.81% Cu and 3.01 oz Ag per ton.

Mildred Peak, AZ is a project that has had historic gold and silver production. The property hosts multiple gold, silver and copper occurrences. Some of these have been trenched and drilled. Mapping, Sampling and geophysics are planned for 2012.

2011 IP/RES Survey

Banner Drill Hole 1,622 Feet



Sulphide targets 2,500 feet in length.

Copper Hills planned drilling in 2012.

Mildred Peak sampling, mapping and updated 43-101 report in 2012.

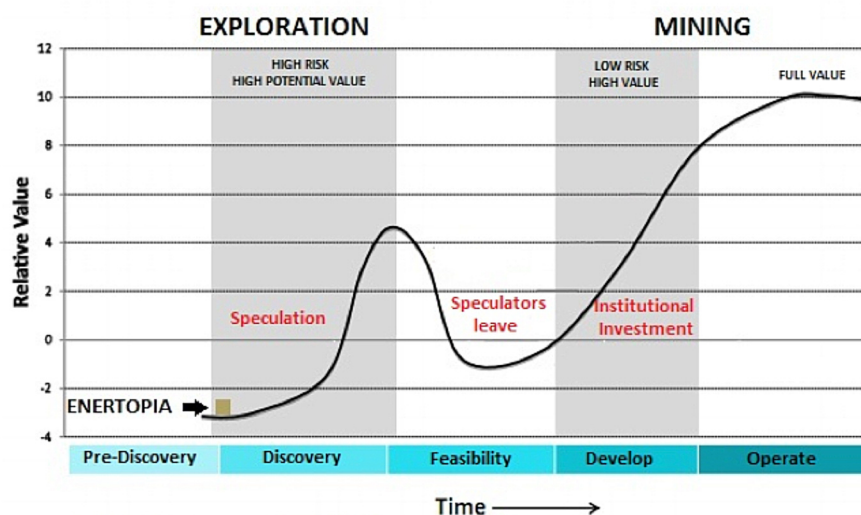
Copper Hills is in the historic silver and zinc producing area of New Mexico.

Mildred Peak is in the heart of porphyry copper deposits of Arizona.

Copper Hills offers at-surface copper silver oxides, with sulphide targets at depth.

Mildred Peak presents large areas of at-surface gold, silver, and copper mineralization.

Investment Life Cycle



Source: Styled after "The Most Important Graph in Mining", Resource Investor Website, Brent Cook

KEY INVESTMENT HIGHLIGHTS

- Early stage value creation through exploration success.
- Favourable location for infrastructure and development in the USA.
- Historical drill results and recent exploration data indicate the potential for expanding current and new areas of mineralization.
- Focused on key areas to explore in 2012.

SHARE STRUCTURE

Issued	24,643,865
Warrants	9,775,800
Options	3,260,000
Fully Diluted	37,675,665
Insider Holdings	27%

www.enertopia.com

CONTACT INFORMATION:

ENERTOPIA CORPORATION

Suite 950 1150 West Pender, Vancouver, BC V6E 4A4
 Phone: 250.765.6422 • Email: mcallister@enertopia.com

Donald Findlay, MSc. PGeo., a Qualified Person under the meaning of Canadian National Instrument 43-101, is responsible for the technical content of this presentation.